



PART OF CIBES LIFT GROUP



Symmetry LULA Elevators

Limited Use/Limited Application

LULA Applications



Standard steel panels painted Ivory, standard Brushed Stainless Steel COP and handrail (floor by others)



Optional Brushed Stainless Steel landing and hoistway doors



Custom laminated safety glass landing and hoistway doors and optional position indicator

Available Customizations

Available Car Panel Options



Flat Panel



Shaker Panel



Recessed Panel



Raised Panel



Steel Panel

Available Wood Species



Red Oak
(standard)



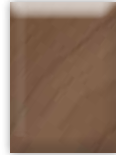
Birch



Maple



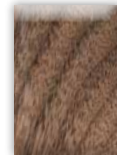
Alder



Cherry



Hickory



Walnut



White Oak



Walnut wood car prepped for glass [by others]

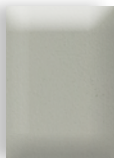


Brushed Stainless Steel car with custom laminate panels



Door in Brushed Stainless Steel

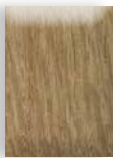
Available Laminate Panel Options



Dove Grey



Graphite
Nebula



Loft Oak



Alabaster



Williamsburg
Cherry



Astro
Strandz

Fixture Finish Options



Brushed
Stainless
Steel**



Black



Vintage
Bronze

Available Car/Door Finish Options



Ivory*



Brushed
Stainless
Steel



Black



Architectural
White



Grey



RAL

To see more custom elevator options please reach out to your local Symmetry representative
Colors illustrated may vary due to print or digital technology

* Standard finish for car and car door is Ivory
** Standard finish for fixtures is Brushed Stainless Steel

What is a LULA Elevator?

The LULA Elevator is designed to meet the requirements of ADA and to provide access for low occupancy/low rise commercial buildings where a traditional passenger elevator is not feasible or required by code. Engineered and designed for limited commercial use.

This brochure is intended for INFORMATIONAL PURPOSES ONLY and SHOULD NOT be used for construction.

Standard Features

- Code Compliance: Designed to comply with ASME A17.1 Section 5.2 and includes ETL, UL or CSA certified components
- Rated Capacity: 1,400 lbs. (635 kg)
- Lifting Height: Up to 25'0"
- Power Supply: 208/230 VAC, 1 PH, 30 amp, 60 Hz, 4 HP; 3 PH motor and controller also available
- Interior Car Height: 7'0"
- Speed: 30 fpm; also available as 40 fpm with variance
- Automatic self-leveling
- Drive System: 2:1 roped hydraulic
- Stops: Two
- Doors: 3'0" x 6'8" automatic horizontally sliding, two speed hoistway and car door; full-height light curtain
- Pit Depth: 13" standard, 14" if buffer springs required
- Selective Collective Programmable Logic Controller (PLC)
- Overhead: New construction 132", existing construction as low as 104"
- Car-mounted directional indicator with audible signals
- 4 HP submersible pump and motor for quiet operation
- Two-speed control valve
- Low oil protection
- Homing timer
- Digital position indicator
- Warranty: 3-year limited parts, extended parts warranty available

Safety Features

- ADA hands-free phone
- Keyed in-car stop switch and alarm button
- Emergency lighting in car interior
- Uninterruptible Power Supply (UPS) for car lowering and power opening of the car and hoistway doors in the event of a power failure
- Broken/slack suspension safeties
- Overspeed valve
- Tactile/braille characters for COP and landings

Optional Features

- Machine room less (MRL)
- Stops: Up to three
- Steel or wood car prepped for glass (glass by others)
- Overspeed governor
- Landing position indicator
- Keyed hoistway access
- Phase 1 and Phase 2 fire service
- Phone line monitoring system
- LED lights with Polished Brass, Brushed Nickel, Bronze or White trim rings
- Ventilation system
- Audio visual two way communication system (required by ASME A17.1-2019 and later)
- 3D light curtain (required by ASME A17.1-2019 and later)
- Keyed controls



Standard Brushed Stainless Steel COP with position indicator



Standard Brushed Stainless Steel handrail with turnbacks



Standard Brushed Stainless Steel hall call




Car directional indicator



Standard LED light with Black trim ring

Symmetry Advantages:

- Shallowest pit required
- Shortest overhead required
- Single phase power
- ADA compliant
- Made in the U.S.A. 

Visit symmetryelevator.com to view the LULA Design Guide, specification, typical drawings and more

Clear Platform Size	Enter/Exit Same Side	Straight-Through	90° Adjacent
48"W x 54"D	✓	✓	
42"W x 54"D	✓	✓	
42"W x 60"D	✓	✓	
51"W x 51"D			✓

